

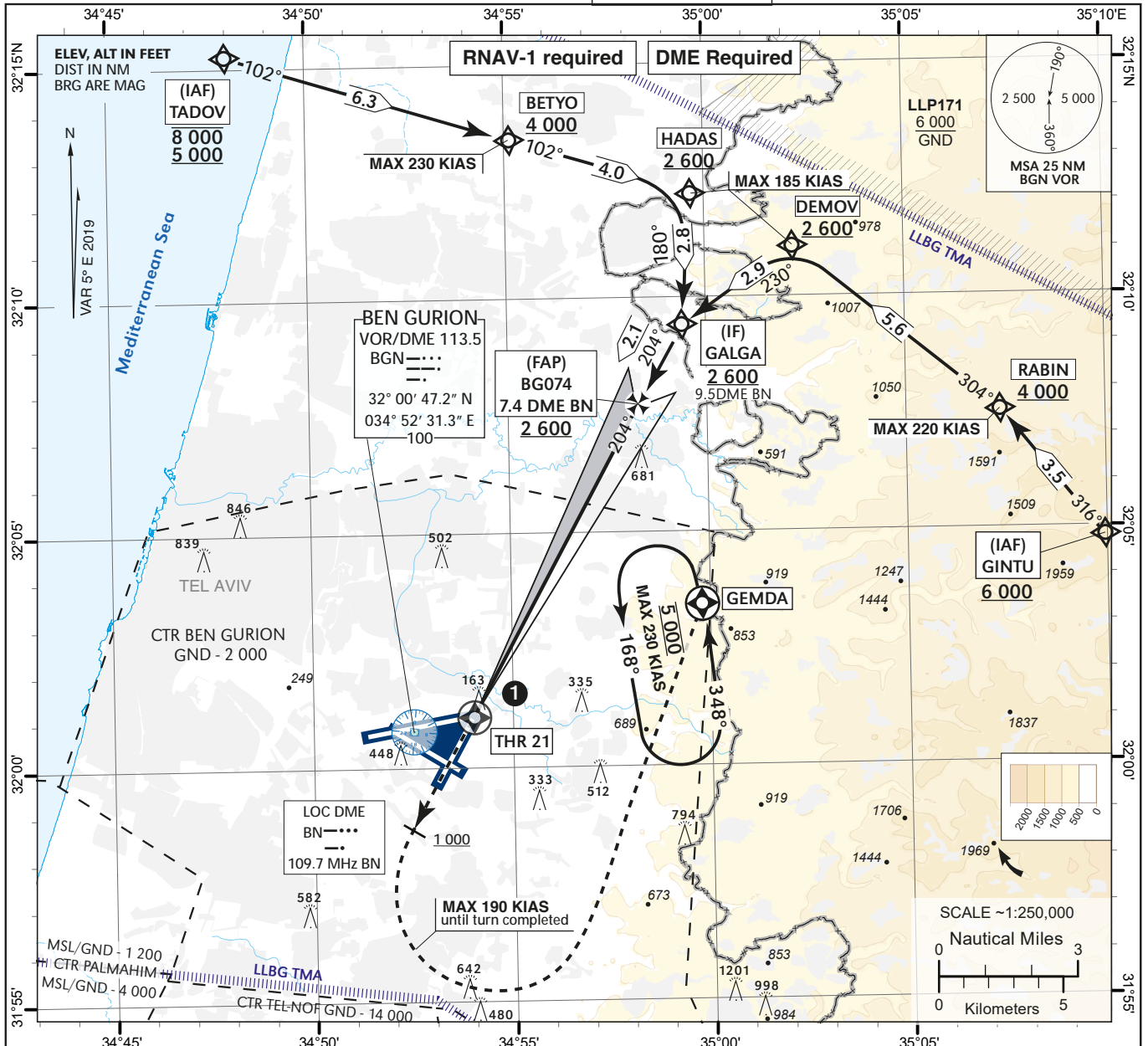
**INSTRUMENT
APPROACH
CHART - ICAO**

TRANSITION
ALTITUDE 18 000

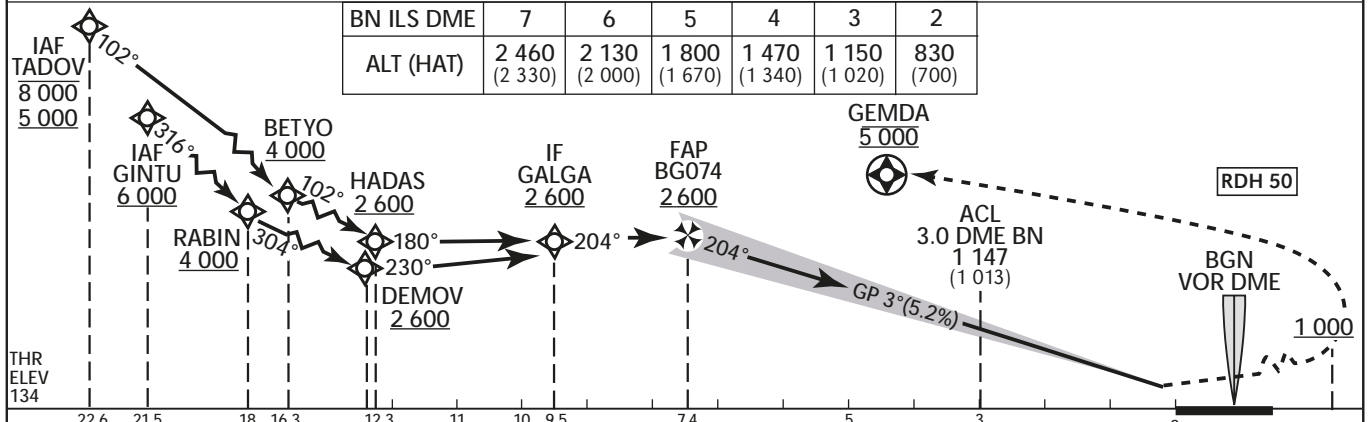
AERODROME ELEV 134 ft
HEIGHTS RELATED TO
THR ELEV 134 ft

ATIS Arrival 132.50
ARR 131.10
APP 120.50
TWR 134.60

**TEL-AVIV / BEN-GURION (LLBG)
ILS RWY 21**



BN ILS DME	7	6	5	4	3	2
ALT (HAT)	2 460 (2 330)	2 130 (2 000)	1 800 (1 670)	1 470 (1 340)	1 150 (1 020)	830 (700)



BN DME reads 0 at THR
NM to THR RWY 21

1 Auto landing prohibited

	OCA/(H)	A	B	C	D
STA	ILS CAT I	293 (159)	305 (171)	313 (179)	324 (190)
	CIRCLING	N/A			

MISSED APPROACH:
Initial climb 5 000. Climb on course 204°. Upon reaching 1 000 turn **LEFT (MAX 190 KIAS)** to GEMDA 5 000 and **HOLD**. Missed approach requires a 4.5% (270/NM) climb gradient due to airspace restrictions. If unable to comply advise ATC.

ILS RWY 21 (from TADOV)

Navigation Specification	Path Descriptor (Recommended)	Waypoint Identifier	Latitude Longitude	Fly-Over	Course/Track M° (T°)	Distance (NM)	Turn Direction	Altitude (ft)	Speed (Kts)	Remarks
RNAV1	IF	TADOV	32° 15' 15"N 034° 48' 00" E	-				-8 000 +5 000		IAF
RNAV1	TF	BETYO	32° 13' 24"N 034° 55' 08" E	-	102 (106.9)	6.3		+4 000	-230	
RNAV1	TF	HADAS	32° 12' 13"N 034° 59' 40" E	-	102 (107.0)	4.0		+2 600	-185	
RNAV1	TF	GALGA	32° 09' 25"N 034° 59' 24" E	-	180 (184.6)	2.8	R	+2 600		IF
RNAV1	TF	BG074	32° 07' 36.81"N 034° 58' 13.95" E	-	204 (208.9)	2.1	R	+2 600		FAP
RNAV1	CF	THR21	32° 01' 05.25"N 034° 54' 00.81" E	Y	204 (208.9)	7.4		+183		

ILS RWY 21 (from GINTU)

Navigation Specification	Path Descriptor (Recommended)	Waypoint Identifier	Latitude Longitude	Fly-Over	Course/Track M° (T°)	Distance (NM)	Turn Direction	Altitude (ft)	Speed (Kts)	Remarks
RNAV1	IF	GINTU	32° 04' 48"N 035° 09' 58" E	-				+6 000		IAF
RNAV1	TF	RABIN	32° 07' 32"N 035° 07' 21" E	-	316 (320.8)	3.5		+4 000	-220	
RNAV1	TF	DEMOV	32° 11' 05.4"N 035° 02' 12.6" E	-	304 (309.1)	5.6	L	+2 600	-185	
RNAV1	TF	GALGA	32° 09' 25"N 034° 59' 24" E	-	230 (235.0)	2.9	L	+2 600		IF
RNAV1	TF	BG074	32° 07' 36.81"N 034° 58' 13.95" E	-	204 (208.9)	2.1	L	+2 600		FAP
RNAV1	CF	THR21	32° 01' 05.25"N 034° 54' 00.81" E	Y	204 (208.9)	7.4		+183		

RWY21 Intermediate and Final Approach

FIX	Latitude Longitude	True Azimuth (reference)	DME distance
IF	31° 09' 25"N 034° 59' 24" E	028.9 (LOC 21)	9.5 DME BN* 10.4 DME BGN
FAP	32° 07' 36.81"N 034° 58' 13.95" E	028.9 (LOC 21)	7.4 DME BN* 8.4 DME BGN
THR21	32° 01' 05.25"N 034° 54' 00.81" E	028.9 (LOC 21)	
			* 0 at THR

STANDARD MISSED APPROACH

Navigation Specification	Path Descriptor (Recommended)	Waypoint Identifier	Latitude Longitude	Fly-Over	Course/Track M° (T°)	Distance (NM)	Turn Direction	Altitude (ft)	Speed (Kts)	Remarks
RNAV1	CA				204 (208.9)			+1 000		
RNAV1	DF	GEMDA	32° 03' 26"N 034° 59' 48" E	Y			L	@5000	-190	
RNAV1	HM	GEMDA	32° 03' 26"N 034° 59' 48" E	Y	348 (353)		L	@5000	-230	

HOLDING IDENTIFICATION

Holding Fix	Latitude Longitude	Inbound Course/Track M° (T°)	MAX IAS (Kts)	Altitude (ft)	Outbound Time / Distance	Turn Direction
GEMDA	32° 03' 26"N 034° 59' 48" E	348 (353)	-230	@5 000	1 min	L